

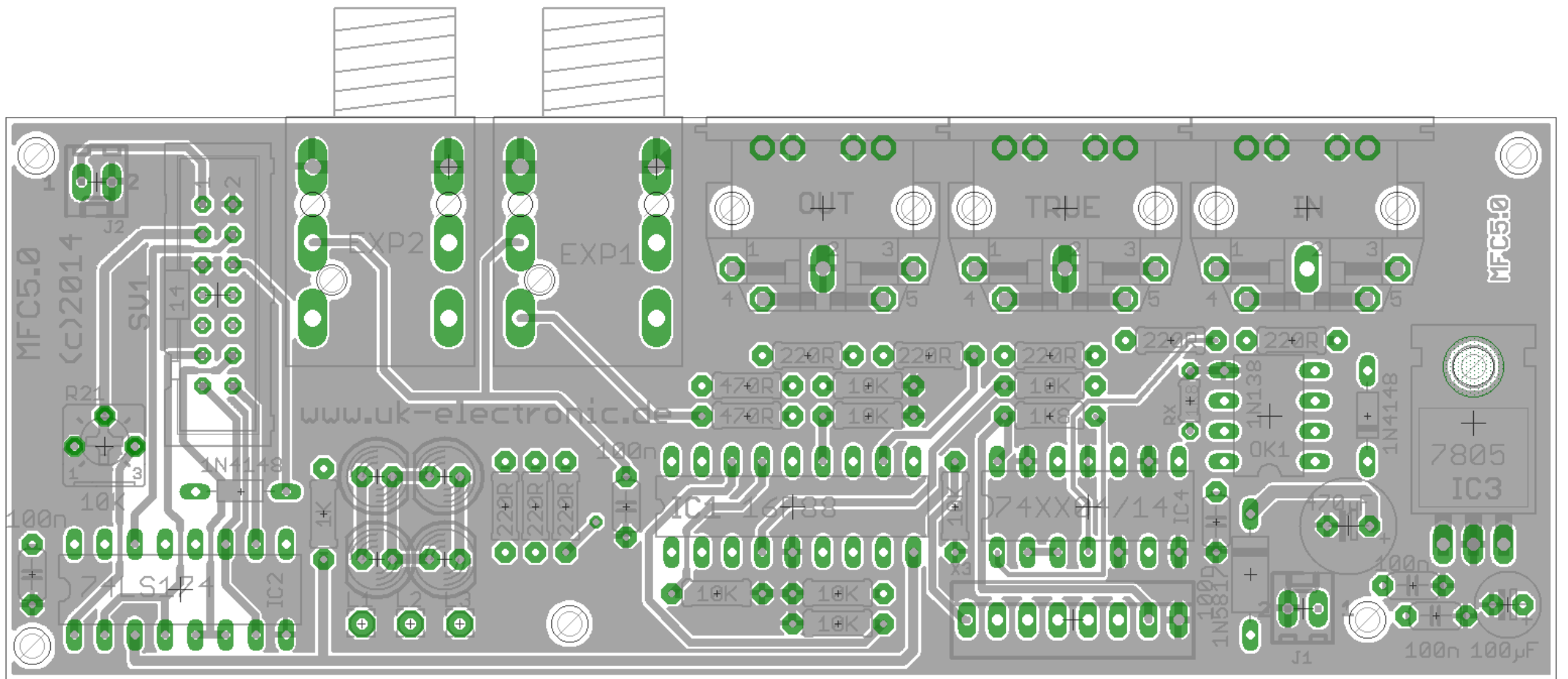
Partlist

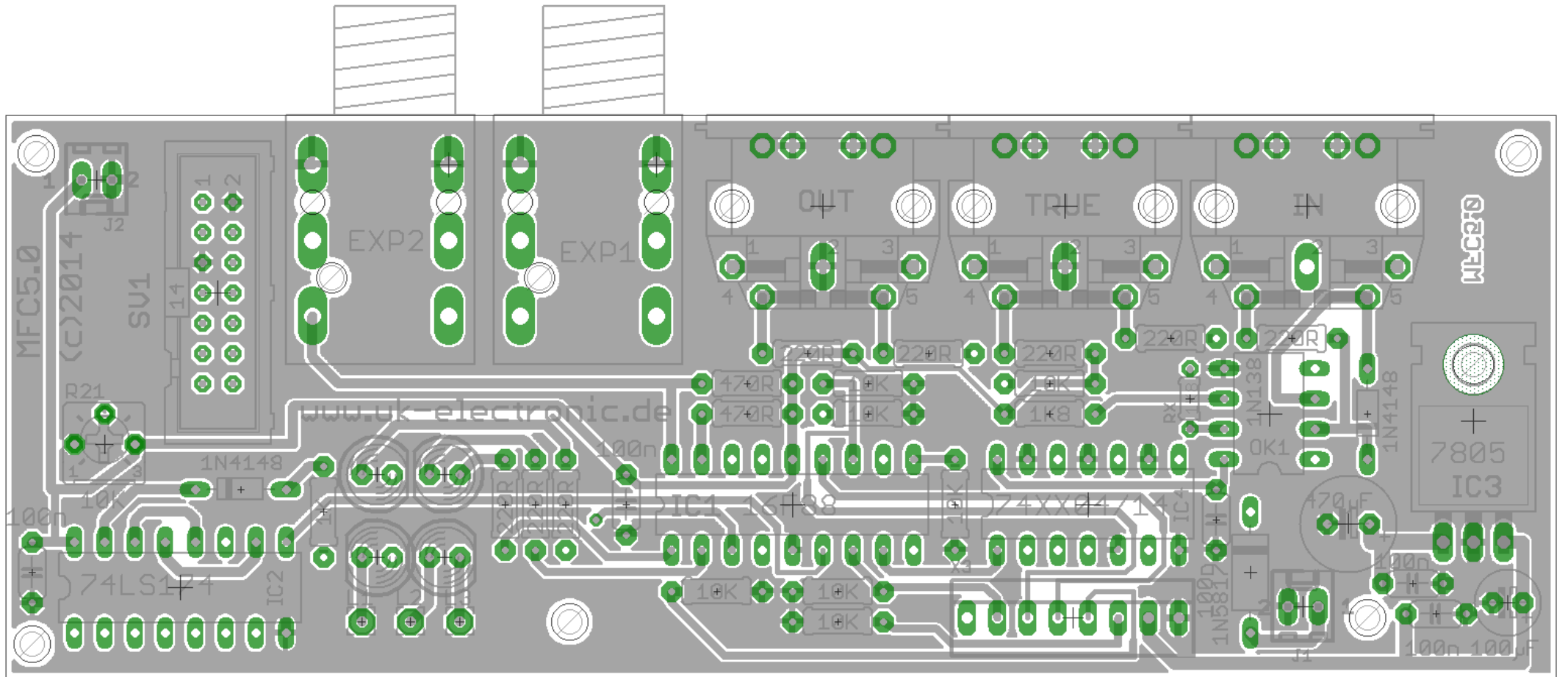
Exported from Midifootcontroller.brd at 12.05.2014 18:21:16

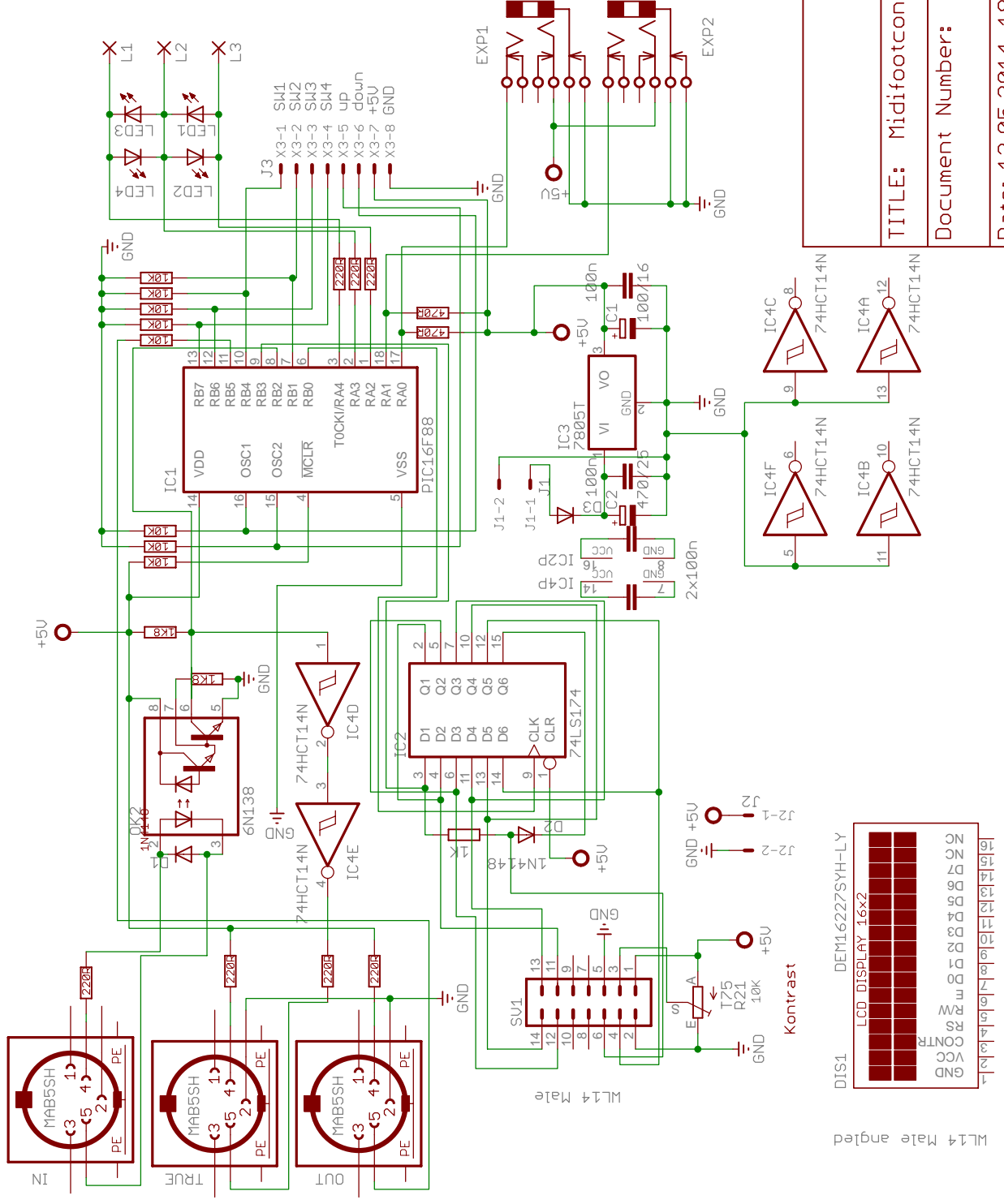
EAGLE Version 6.5.0 Copyright (c) 1988-2013 CadSoft

Assembly variant:

Part	Value	Package	Library	Position (mm)	Orientation
1N5817	1N5817	D-10	diode	(104.4575 8.89)	R270
C1	100/16	E2,5-6	rcl_1	(126.0475 6.35)	R180
C2	470/25	E3,5-8	rcl_1	(112.7125 13.0175)	R180
C3	100n	C050-024X044	rcl_1	(52.07 14.605)	R270
C4	100n	C050-024X044	rcl_1	(118.11 7.9375)	R0
C5	100n	C050-024X044	rcl_1	(101.6 13.335)	R270
C6	100n	C050-024X044	rcl_1	(2.2225 8.89)	R270
C7	100n	C050-024X044	rcl_1	(120.015 5.3975)	R0
D1	1N4148	D-7.5	diode	(114.3 22.225)	R90
D2	1N4148	D-7.5	diode	(19.685 15.875)	R0
E\$1		NRJ6HF1	BUCHSEN	(37.1475 43.18)	R180
E\$2		NRJ6HF1	BUCHSEN	(54.61 43.18)	R180
IC1	PIC16F88	DIL18	microchip	(66.04 14.605)	R0
IC2	74LS174	DIL16	74xx-eu	(14.605 7.62)	R0
IC3	7805T	TO220H	gm-regulators	(123.19 21.59)	R0
IC4	74HCT14N	DIL14	74xx-eu	(90.805 14.605)	R0
IN	MAB5SH	MAB5SH	con-hirschmann	(109.22 39.6875)	R180
J1		6410-02	con-molex	(108.9025 6.0325)	R0
J2		6410-02	con-molex	(7.62 41.91)	R180
L1		2,15/1,0	wirepad	(29.845 4.7625)	R0
L2		2,15/1,0	wirepad	(33.9725 4.7625)	R0
L3		2,15/1,0	wirepad	(38.1 4.7625)	R0
LED1	3mm red	LED5MM	led	(36.83 17.145)	R180
LED2	3mm red	LED5MM	led	(36.83 10.16)	R0
LED3	3mm red	LED5MM	led	(31.115 10.16)	R180
LED4	3mm red	LED5MM	led	(31.115 17.145)	R0
OK1	1N138	DIL08	ref-packages	(106.045 22.225)	R90
OUT	MAB5SH	MAB5SH	con-hirschmann	(68.58 39.6875)	R180
R1	470R	0207/7	rcl_1	(62.23 24.765)	R180
R2	470R	0207/7	rcl_1	(62.23 22.225)	R180
R3	10K	0207/7	rcl_1	(69.85 4.7625)	R180
R4	10K	0207/7	rcl_1	(59.69 7.3025)	R0
R5	10K	0207/7	rcl_1	(72.39 22.225)	R0
R6	10K	0207/7	rcl_1	(72.39 24.765)	R0
R7	10K	0207/7	rcl_1	(79.6925 14.605)	R270
R8	220R	0207/7	rcl_1	(41.91 14.605)	R270
R9	220R	0207/7	rcl_1	(44.45 14.605)	R270
R10	220R	0207/7	rcl_1	(46.99 14.605)	R270
R12	220R	0207/7	rcl_1	(107.95 28.575)	R180
R13	220R	0207/7	rcl_1	(77.47 27.305)	R180
R14	220R	0207/7	rcl_1	(97.79 28.575)	R180
R15	1K8	0207/7	rcl_1	(87.63 22.225)	R0
R16	220R	0207/7	rcl_1	(87.63 27.305)	R180
R17	10K	0207/7	rcl_1	(87.63 24.765)	R0
R18	10K	0207/7	rcl_1	(69.85 7.3025)	R180
R19	1K	0207/7	rcl_1	(26.67 13.97)	R90
R20	220R	0207/7	rcl_1	(67.31 27.305)	R180
R21	10K	B25P	pot	(8.255 19.685)	R0
RX	1K8	0204/5	ref-packages	(99.3775 23.495)	R90
SV1	WL14	ML14	con-harting-ml	(17.78 32.385)	R270
TRUE	MAB5SH	MAB5SH	con-hirschmann	(88.9 39.6875)	R180
X3		22-23-2081	con-molex	(89.535 5.08)	R0







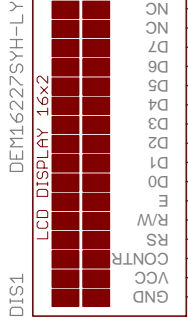
TITLE: Midifootcontroller

Document Number:

Date: 12.05.2014 18:06:32

Sheet: 1/1

REV:



L14 Male angled

Kontrast

TC1602E-01

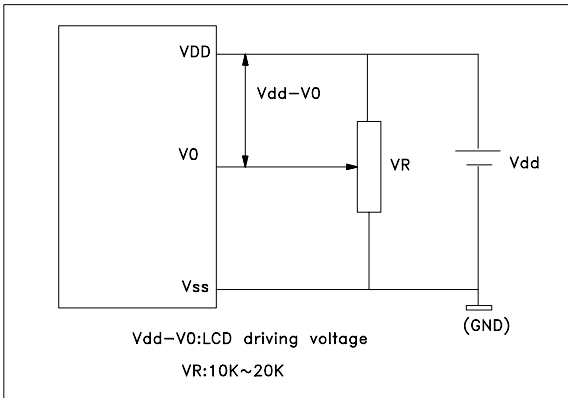
Series

Display Format	16 Characters X 2 Lines
Drive Method	1/16 Duty , 1/5 Bias
LCD Type	STN Yellow green
LED Backlight	Yellow
Viewing direction	6 : 00
Operating Temperature	0 ~+50

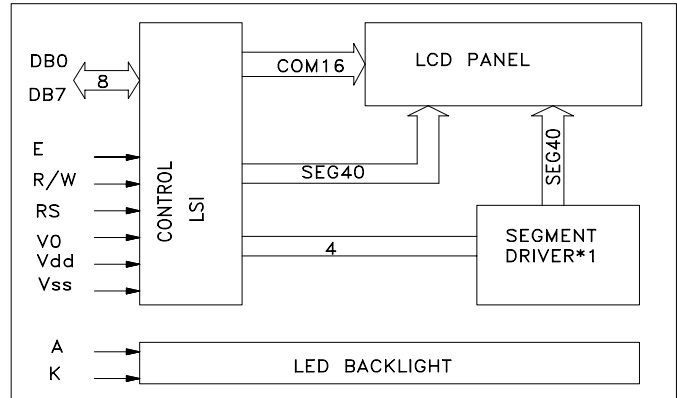
Electrical Characteristics

ITEM	Symbol	Condition	Standard value			UNIT
			Min.	Typ.	Max.	
Supply Voltage For Logic	$V_{DD}-V_{SS}$	--	4.5	5.0	5.5	V
Supply Voltage For LCD	$V_{DD}-V_0$	--	--	4.7	--	V
Input High Voltage	V_{IH}	--	2.2	--	5.0	V
Input Low Voltage	V_{IL}	--	0.3	--	0.6	V
output High Voltage	V_{OH}	$I_{OH}=-0.1mA$	2.4	--	5.0	V
output Low Voltage	V_{OL}	$I_{OL}=0.1mA$	--	--	0.4	V
Power Supply Current	I_{DD}	$V_{DD}=5.0V$	--	1.5	3.0	mA
With B/L	I_{LED}	$V_{LED}=4.2V$	--	100	150	mA

Power supply



Block Diagram



EXTERNAL DIMENSIONS AND DISPLAY PATTERN

